

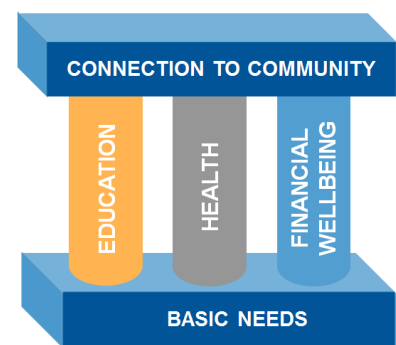
When you give to United Way, you help people live more stable lives, and ultimately, thrive.

## What We Do

In Brown County, 1 in 3 households struggles to meet their most basic needs. This includes those in poverty and those who are ALICE (Asset Limited, Income Constrained, Employed). ALICE lives one crisis from instability and often lacks the representation given to those who are in poverty. **Our community goal is set 10,000 individuals on the path from instability towards stability in 10 years (2018-2028).**

## Our Approach to Community Change

We fight so that everyone will have equal opportunity for stability in education, health, financial wellbeing, and connection to community. Our **Impact Framework** focuses on these areas. We know solving immediate needs is not enough, so we provide diverse, multi-levelled support to build stable lives, families, and a stronger Brown County.



Our **Impact Framework** uses three levels of influence to meet the immediate needs of **individuals**, effect **systemic** change, and by advocating for **policy** change:

- 1) **Program Investment** – Investments in direct service programs to positively impact **individuals**.
  - 23 local programs are receiving 5-year system of care grants beginning in 2019.
- 2) **Impact Initiatives** – Leading and partnering “place-based” efforts improve **systems** in our physical and social environment through research, partnership, and relationship.
  - **Embedded Education Strategy:**
    - **Community Schools are a foundational place-based approach and effective education strategy** which provide academic, emotional, health and social services. Our flagship Community School is Howe Elementary in Green Bay.
- 3) **Advocacy Solutions** – Seeking out the voice of the community and advocating for change to influence **policies**.
  - Our Voice of ALICE research helps to capture the lived experiences of those who are ALICE and to shape our new advocacy agenda.

*When you give to United Way, you help people live more stable lives, and ultimately, thrive. Thank you for your support and partnership!*